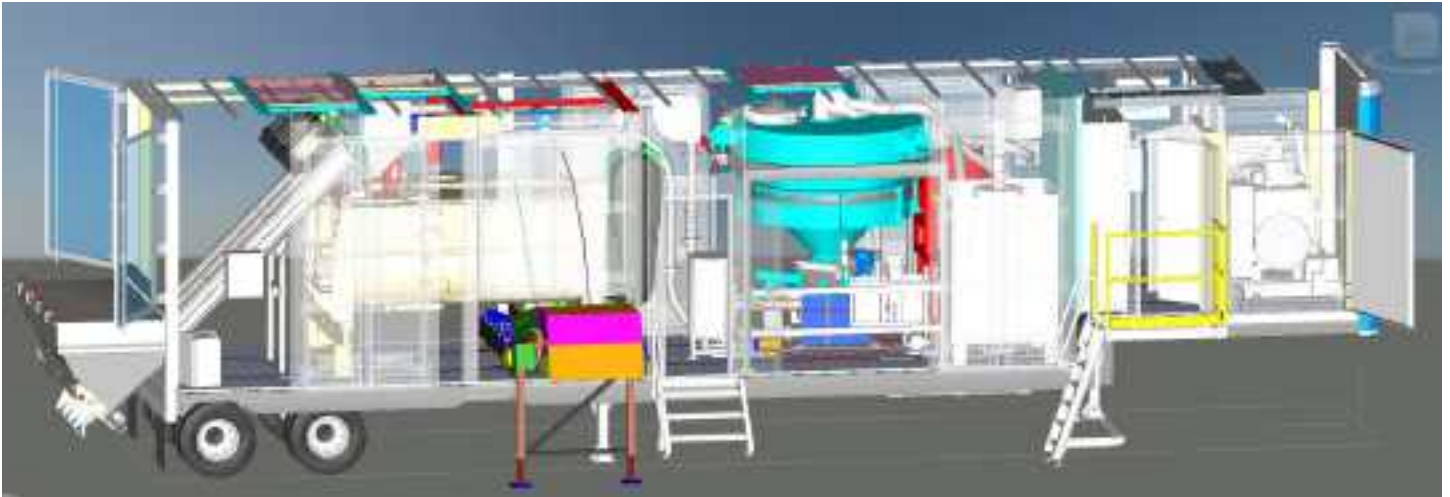




PropCoater™

Proppant Coating Unit



DESCRIPTION

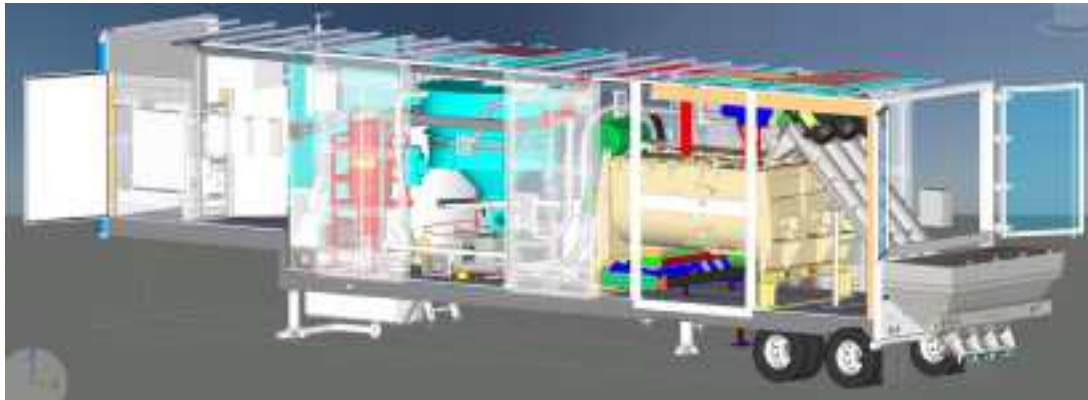
AquaSmart O&G™ (AS O&G™) has developed a novel approach to dry friction reducer (FR) applications that enhances frac fluid performance by treating the proppant, offering on-site produced, 100% dry FR-coated proppant delivered directly to the blender tub. This state-of-the-art solution allows for automated, real-time dry FR dosage control as the frac conditions dictate. It provides superior performance as compared to other FR delivery systems.

APPLICATION

AS O&G™'s coating systems have produced coated proppant at transload facilities and sand mines pumped into over 3,000+ stages across eight basins. The new, unique on-site coating approach provides a full range of solutions for fresh water to high TDS brines in both anionic and cationic charges. Customers can tailor their approach in real-time to varying down-hole demands, such as toe and heel applications. The new application of the technology provides value for operators and service companies through economical, effective, efficient, and environmentally-focused operations.

OPERATION

Fitting directly between the sand silos and blender tub, the AS O&G™ PropCoater™ employs a triple screw design to deliver a wide operational range for proppant delivery. The on-the-fly coating system offers the flexibility to pump the desired frac fluid on demand.



Driver's Side View



Top View

DESIGN PARAMETERS

Coated Proppant Rate	10 - 500 TPH
Dry FR Loading	0.5 - 10 PPTG
Dry FR Rate	2 - 62 lb./min.

SPECIFICATIONS

Trailer Dimensions	45' L x 8'6" W x 13'6" H
Curb Weight	43,000 lb.
Dry FR Capacity	5,000 lb.
Tackifier Solution Capacity	550 gal.
Generator Power	180KW prime, 200KW
Triple Screw Sand Conveyance	1 x 100 TPH (Center) 2 x 200 TPH (Left & Right)

All statements, information, and data given herein are believed to be accurate, but are presented without warranty, expressed or implied. Statements concerning possible use are made without representation or warranty. The user should not assume that all safety measures are indicated or that other measures may not be required. Any determination of the suitability of a particular product for any use contemplated by the user is the sole responsibility of the user.